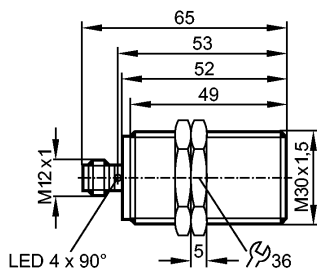


IIC218

IHK3010-BPKG/M/K1/US-104-DPS

Inductive sensors



Made in Germany

Product characteristics

Inductive sensor

Metal thread M30 x 1.5

Connector

Electromagnetic-field immune

Gold-plated contacts

Correction factor = 1

Sensing range 10 mm; [f] flush mountable

Electrical data

Electrical design	DC PNP
Operating voltage [V]	10...30 DC *)
Current consumption [mA]	< 15
Protection class	II
Reverse polarity protection	yes

Outputs

Output function	normally open
Voltage drop [V]	< 2.5
Leakage current [mA]	< 0.1
Current rating [mA]	200
Short-circuit protection	pulsed
Overload protection	yes
Switching frequency [Hz]	1000

Range

Sensing range [mm]	10
Real sensing range (Sr) [mm]	10 ± 10 %
Operating distance [mm]	0...8.1

Accuracy / deviations

Correction factors	mild steel = 1 / stainless steel approx. 1 / brass approx. 1 / aluminium approx. 1 / copper approx. 1
Hysteresis [% of Sr]	1...15
Switch-point drift [% of Sr]	-10...10

Environment

Ambient temperature [°C]	-25...70
Protection	IP 68; "Coolant"

Tests / approvals

EMC	EN 61000-4-2 ESD: 4 kV CD / 8 kV AD EN 61000-4-3 HF radiated: 10 V/m (80...1000 MHz)
-----	---

IIC218

IHK3010-BPKG/M/K1/US-104-DPS

Inductive sensors

	EN 61000-4-4 Burst:	2 kV
	EN 61000-4-5 Surge:	0.5 kV (line to line, Ri: 20Ω)
	EN 61000-4-6 HF conducted:	10 V (0.15...80 MHz)
	EN 55011:	class B
MTTF	[Years]	1912

Mechanical data

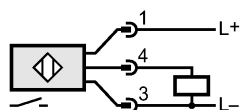
Mounting	flush mountable
Housing materials	stainless steel (316L); active face: LCP
Weight	[kg] 0.125

Displays / operating elements

Output status indication	LED	yellow (4 x 90°)
--------------------------	-----	------------------

Electrical connection

Connection	M12 connector; Gold-plated contacts
------------	-------------------------------------

Wiring

Accessories

Accessories (included)	2 lock nuts
------------------------	-------------

Remarks

Remarks	*) cULus - Class 2 source required
---------	------------------------------------

Pack quantity	[piece] 1
---------------	-----------