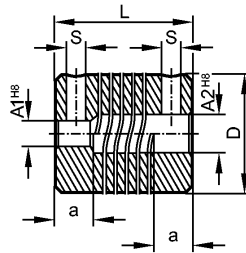


E60022

COUPLING 25-10-10-24-SV

Accessories



Product characteristics

Flexible coupling with adjusting screw connection [SV]

Ø 10 mm / Ø 10 mm

Mechanical data

Dimension [mm]	D: 25 A1: 10 A2: 10 L: 24 a: 7 S: M4
Max. permissible rpm [1/min]	8000
Max. torque [Ncm]	100
Max. torque clamping screws [Ncm]	120
Rigidity of the torsion spring [Nm/rad]	20
Displacement	max. radial displacement: ± 0.3 mm max. angular displacement: ± 4.0 ° max. axial displacement: ± 0.5 mm
Housing materials	aluminium
Weight [kg]	0.026

Remarks

Remarks	The data indicated apply to couplings with the above hub borings at an ambient temperature of 23 °C. The values of radial, angular and axial displacement are maximum values which must not reach their maximum simultaneously while in operation.
---------	---

Pack quantity [piece]	1
-----------------------	---